



*RISING ABOVE
THE ORDINARY*

CONRAD®
BANGKOK

NEVER JUST STAY. STAY INSPIRED.

A WARM WELCOME TO THE CONRAD BANGKOK

Conrad Bangkok marries luxury with innovation and elegant design with intuitive service to ensure that our guests Stay Inspired. A major refurbishment in 2018 has further enhanced our guests' experience with a stylish new interior, ensuring that the Conrad Bangkok remains at the forefront of style and sophistication.

In addition, with newly refurbished, state-of-the-art meeting and banquet rooms, Conrad Bangkok is also a renowned destination for the ideal business meeting, convention or high society event.

LOCATION

Conrad Bangkok resides in the heart of Bangkok's commercial district, connecting our distinguished guests with the incredible sights, shopping and entertainment options of this vibrant, bustling metropolis. Access to Bangkok's BTS skytrain system via the Phloen Chit station is also within easy reach. In addition, both of Bangkok's international airports are conveniently located less than 45 minutes from the hotel, depending on traffic conditions.

- All Seasons Place, 87 Wireless Road, Pathumwan, Bangkok 10330, Thailand
Tel +66 2 690 9999
Fax +66 2 690 9000

HOTEL HIGHLIGHTS

- Atrium lobby
- Direct access to All Seasons Shopping Mall
- State-of-the-art meeting rooms and conference facilities
- Hilton Honors Application- The app that places personal luxury in your hands
- Swimming pool, jogging track and two tennis courts located on the 7th floor
- 24/7 Fitness Club boasting 590 sqm of space
- Hotel limousine transfer by BMW 7-Series
- Internet access with WiFi service throughout the hotel

GUEST ROOM

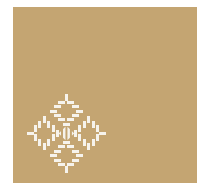
Our 391 guest rooms and suites are beautifully appointed and seamlessly blend contemporary luxury and innovative technology. From the 41 sqm Deluxe Room to the 238 sqm Presidential Suite, distinguished guests will discover an experience that exceeds their expectations.

- 49" TV
- Mobile digital key access
- Bedside universal socket and USB port, multimedia port and bluetooth
- Internet access
- Two phone lines with speaker function and voice mail
- Laptop available on request
- Local and satellite TV channels
- In-room safe
- Coffee and tea making facilities
- Premium branded amenity

BUSINESS CENTER

A fully-equipped Business Center provides a complete range of secretarial and office-related services, such as couriers, photocopying and printing.

- Fully-equipped private offices with internet access
- Meeting rooms with dedicated video conferencing facilities
- 24-hour access



MEETING / FUNCTION ROOMS

- 35 x 5 meters modular LED wall
- Sound system audio by Acoustic Design
- 360 degree visibility
- Presidential teleprompter
- Cutting-edge video conferencing system
- Individual adjustable lighting
- Self-tracking stage camera
- Motorized backdrop and baton system
- Motorized stage lighting trusses
- Wireless LAN

EXECUTIVE LOUNGE

Located on the 29th floor, this cozy lounge is provided free of charge to guests staying on the Executive Floor.

- Meeting room for up to 12 persons
- Internet lounge
- Business center and library

PERSONAL LUXURY AT YOUR FINGERTIPS



With the Hilton Honors app, our guests can now customize the details of their hotel stay before, during and after each visit from a smartphone or tablet. This innovative mobile technology enables guests to fully indulge in the smart luxury service that Conrad provides, and helps redefine their stay to be as unique and individualized as they are themselves.

FITNESS AND RECREATION

BodyWorx health club features a fully-equipped fitness center, aerobics room, steam room and sauna. The spacious 5,340 sqm recreation area includes a whirlpool and sun deck with outdoor swimming pool, two tennis courts, jogging track and Seasons Spa with 11 luxuriously appointed treatment rooms.

EXECUTIVE FLOOR BENEFITS

- Complimentary internet access
- Complimentary local telephone calls, outgoing domestic fax and calling card numbers (except mobile phone numbers)
- Private check-in and check-out at the Executive Lounge
- Late check-out until 16:00 hours
- Complimentary pressing- 3 pieces per stay
- Complimentary buffet breakfast at the Executive Lounge
- Coffee, tea and soft drinks served throughout the day, and evening cocktails with canapes
- Personal concierge service
- Complimentary use of meeting room for 2 hours per stay (not applicable to group meetings)

RESTAURANTS

Café@2

Indulge in a wide selection of international cuisines, from Thai favorites to Japanese, European, Chinese and Indian. Freshly made pastries and ice cream will satisfy anyone with a sweet tooth.

KiSara

Beautifully captures the culinary spirit of Japan. The restaurant features fresh sushi, sizzling teppanyaki and private tatami rooms. Exquisite meats and seafood are accompanied by an exclusive range of Japanese sake.

Liu

This restaurant blends traditional China classics with contemporary interpretations of authentic flavor.

Diplomat Bar

This elegant bar boasts a selection of fine wines, spirits and specialty cocktails, and is renowned as a late night live jazz venue.

Deli by Conrad

This informal restaurant is open for breakfast and lunch. Choose from tempting cakes, homemade sandwiches, light comfort foods and the finest coffees and pastries.

City Terrace

The hotel's poolside restaurant, guests can enjoy casual dining with a selection of light snacks and healthy options in a welcoming open air lounge location.

MIX BUSINESS AND LEISURE WITH SPECTACULAR RESULTS

As millions of travelers can testify*, Thailand is one of the world's most hospitable countries. The country is blessed with great natural beauty, gracious and generous people and a proud history of independence and ingenuity. This fusion of natural, cultural and human resources - combined with its strategic location at the crossroads of Asia - has propelled Thailand's service industry into the global limelight.

In Bangkok, those who wish to organize a convention or business event here will be spoiled for choice. Their delegates will have access to the cultural charms of the Old City and colonial era shop houses in Chinatown. Asia's best food scene. An electrifying nightlife. But also, two international airports, first-world connectivity and a world-class service industry.

At the heart of this city resides the Conrad Bangkok. With our versatile and high-tech meeting rooms and venues, event organizers will be perfectly placed to host a successful business event while accessing the city's charms to ensure that their delegates also enjoy an unforgettable trip.



*Bangkok is the world's 2nd most visited city. Source: World Travel Market London

AT THE CENTER OF EVERYTHING

Conrad Bangkok is located just a few minutes' walk from the Phloen Chit BTS station on the Sukhumvit line. For those wanting to enjoy a serene walk in the morning or afternoon, there's the nearby Lumpini park, Bangkok's largest public recreational area. For those wanting to indulge in high-end shopping, there's Central Chidlom and Central Embassy. Great restaurants and authentic cultural experiences are also packed into the nearby areas of Siam, Sathorn, Asoke and Sukhumvit road, all within a few stops of Phloen Chit BTS station, and all popular with visitors from around the world. Lastly, the Queen Sirikit National Convention Center (QSNCC), the focal point of premier conventions and exhibitions held in Thailand, is just 3 stops away from Phloen Chit station.

Conrad Bangkok. From our strategic location, guests can enjoy convenient access to the best Bangkok has to offer, completely circumventing the city's notorious traffic problem.



- BTS 1** Nana Station
- BTS 2** Phloen Chit Station
- BTS 3** Chit Lom Station
- BTS 4** Siam Station
- BTS 5** National Stadium Station
- BTS 6** Ratchadamri Station
- BTS 7** Sala Daeng Station
- BTS 8** Chong Nonsi Station
- MRT 1** Si Lom Station
- MRT 2** Sam Yan Station
- MRT 3** Hua Lamphong Station

YOUR EVENT & CONRAD BANGKOK A MATCH MADE IN HEAVEN

With 22 refurbished, state-of-the-art meeting and conference rooms, Conrad Bangkok offers some of the city's most versatile and spacious venues, equally sought after by locals and international guests. Exuding a grand ambience with venetian-glass chandeliers, each meeting room is also equipped with bleeding-edge equipment and serviced by professional staff, whose personalized service makes Conrad Bangkok the perfect place to host any event.

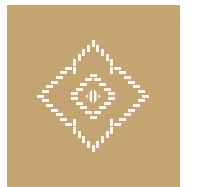
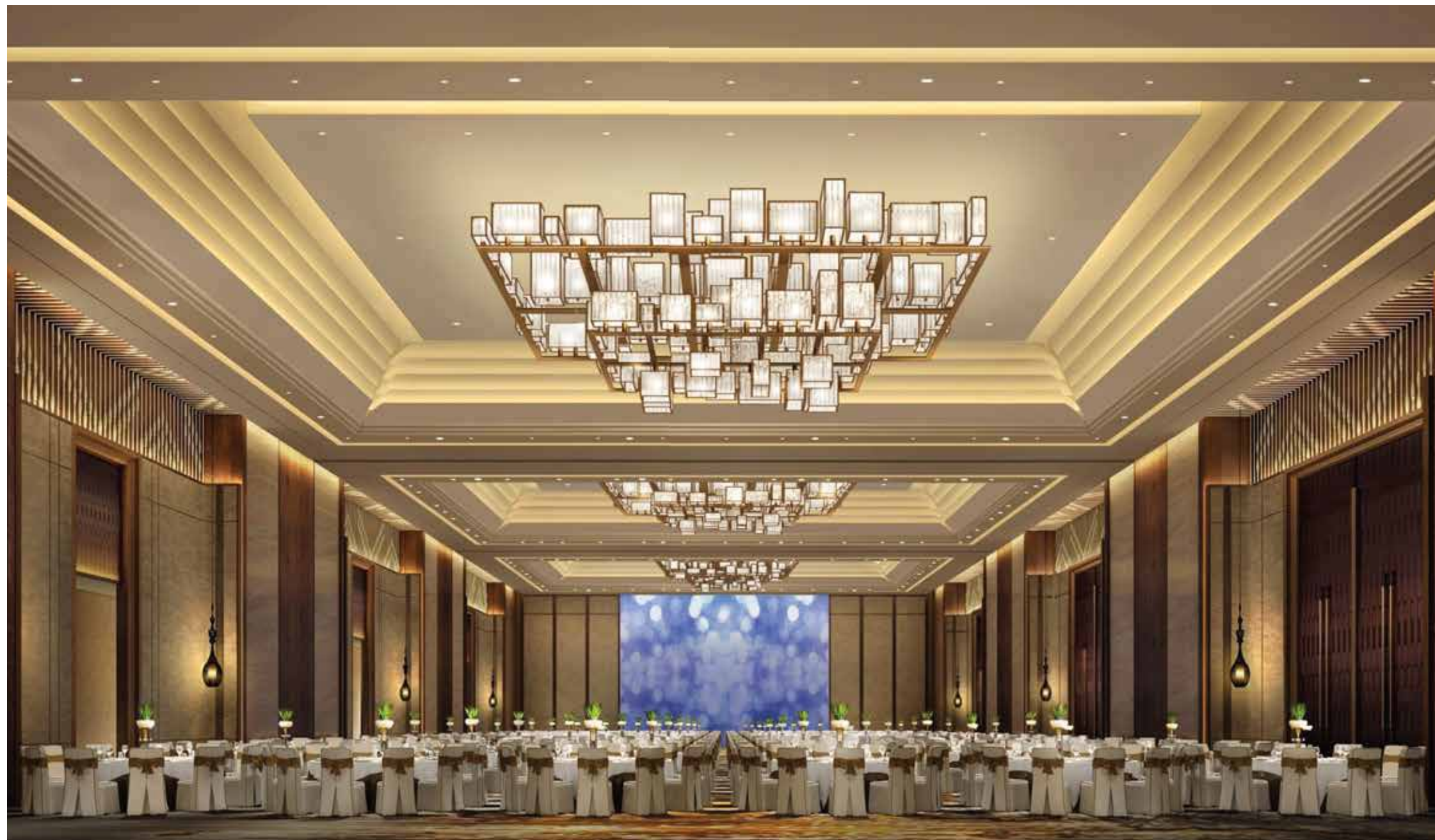
BANQUETS

ROOM NAME	AREA		DIMENSIONS		HEIGHT		CAPACITIES					
	Meters ²	Feet ²	Meters	Feet	Meters	Feet	Theater	Class-Room	U-Shape	Board-Room	Cocktail	Banquet
ANNEX BUILDING LEVEL 4												
Ballroom	778	8376	36 x 22	117 x 71	8	27	1200	700	140	110	1200	600
Ballroom I	254	2729	12 x 22	38 x 71	8	27	320	180	60	60	250	180
Ballroom II	265	2853	12 x 22	40 x 71	8	27	320	180	60	60	250	180
Ballroom III	260	2792	12 x 22	39 x 71	8	27	320	180	60	60	250	180
Pre-Function Area	303	3263	33 x 9	108 x 30	8	27	N/A	N/A	N/A	N/A	300	160
ANNEX BUILDING LEVEL 2												
New York Room I	85	917	8 x 10	28 x 33	4	14	70	35	20	25	90	50
New York Room II	85	917	8 x 10	28 x 33	4	14	70	35	20	25	80	40
New York Room III	85	917	8 x 10	28 x 33	4	14	70	35	20	25	80	40
New York Room I, II, III	256	2750	25 x 10	83 x 33	4	14	240	120	60	70	250	140
Beverly Hills Room I	59	640	6 x 10	19 x 34	4	14	48	25	18	25	70	30
Beverly Hills Room II	88	946	9 x 10	28 x 34	4	14	70	35	20	25	80	40
Beverly Hills Room III	83	889	8 x 10	26 x 34	4	14	70	35	20	25	80	40
Beverly Hills Room I, II, III	230	2474	22 x 10	73 x 34	4	14	200	100	60	65	220	120
ANNEX BUILDING LEVEL 1												
London Room I	77	826	10 x 8	32 x 26	4	14	45	36	20	24	80	50
London Room II	64	692	8 x 8	27 x 26	4	14	45	36	20	24	80	50
London Room I - II	141	1518	18 x 8	59 x 26	4	14	140	70	44	42	170	100
HOTEL BUILDING LEVEL 2												
Brussels Room	37	393	8 x 5	26 x 15	3	10	N/A	N/A	N/A	14	N/A	N/A
Singapore Room	42	448	7 x 6	24 x 19	3	10	N/A	N/A	N/A	14	N/A	N/A
Hong Kong Room I	27	292	4 x 7	14 x 21	3	10	20	12	12	14	25	10
Hong Kong Room II	27	287	4 x 7	13 x 21	3	10	20	12	12	14	25	10
Hong Kong Room I - II	54	578	7 x 8	21 x 27	3	10	40	30	24	20	50	30
Dublin Room	34	367	4 x 8	14 x 26	3	10	N/A	N/A	N/A	14	N/A	N/A
Cairo Room	25	265	6 x 5	18 x 15	3	10	N/A	N/A	N/A	8	N/A	N/A
Brisbane Room	28	301	6 x 5	20 x 15	3	10	N/A	N/A	N/A	8	N/A	N/A
HOTEL BUILDING LEVEL 3												
Willow Room I	52	562	8 x 7	25 x 23	3	9	35	24	14	16	40	30
Willow Room II	17	181	4 x 4	14 x 13	3	9	N/A	N/A	N/A	N/A	N/A	10
Willow Room III	41	401	7 x 6	24 x 19	3	9	30	15	12	14	30	20
Willow Room IV	41	442	7 x 6	24 x 19	3	9	30	15	12	14	30	20

CONRAD BALLROOM

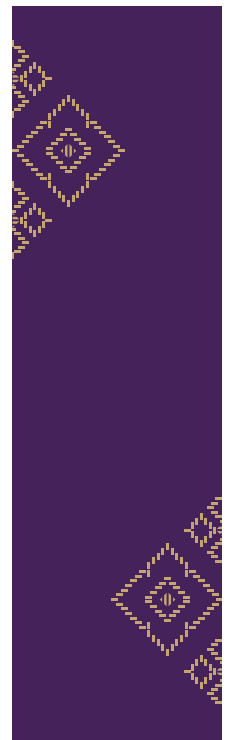
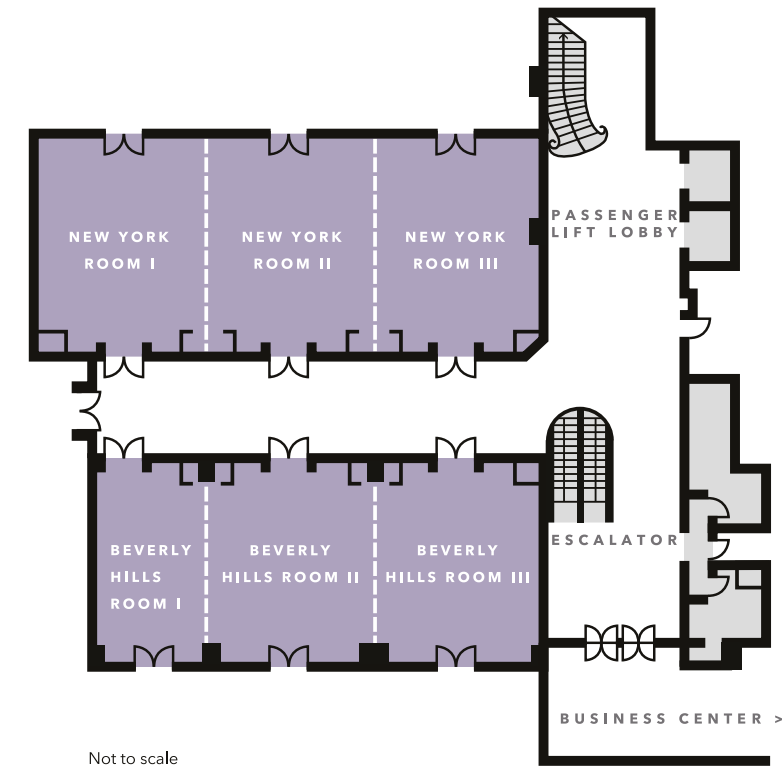
Featuring 780 sqm of columnless space in a grand and sophisticated setting, the Conrad Ballroom boasts one of the highest ceilings in the city at 8 magnificent meters. The ballroom is able to host 60 tables for a Chinese dinner or 1,200 guests for a standing cocktail reception. The ballroom is also equipped with a high-definition Audio/Visual system.

In fact, the Conrad Ballroom holds the accolade of being the most high-tech ballroom in the capital. It is uniquely equipped with 35x5 meters modular LED panels that can project images to all guests regardless of their seating direction. And to perfect our guests' experience, acoustic engineers have designed the ballroom's acoustics to achieve concert hall fidelity, ensuring that the full frequency of crystal clear sound is audible.



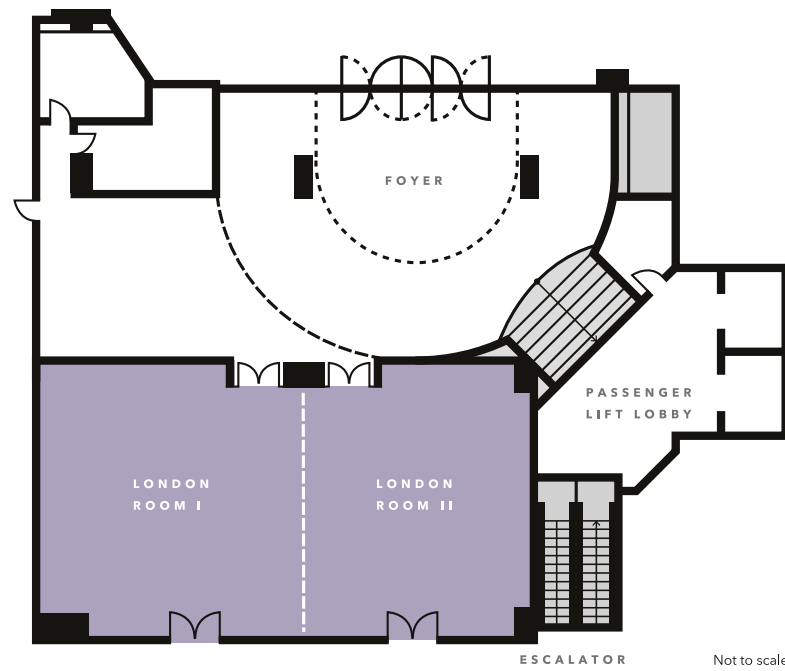
NEW YORK & BEVERLY HILLS ROOMS

These two modular junior ballrooms feature 255 sqm of floor space and a lofty 4.3 meter ceiling. They are fully equipped with the latest technology and offer multiple projection options with a fully independent climate control.



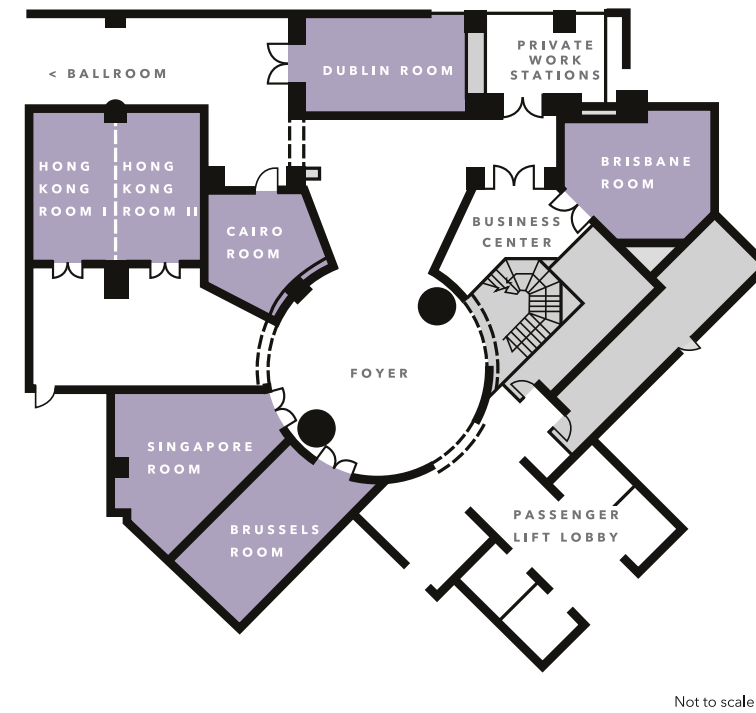
LONDON ROOM

The ideal wedding venue at 141 sqm of space, with a private entrance and dedicated function area. Our unique Bride Butler service helps to alleviate the day's stress and allows the bride's beauty to bloom, ensuring that her dream wedding becomes a reality.



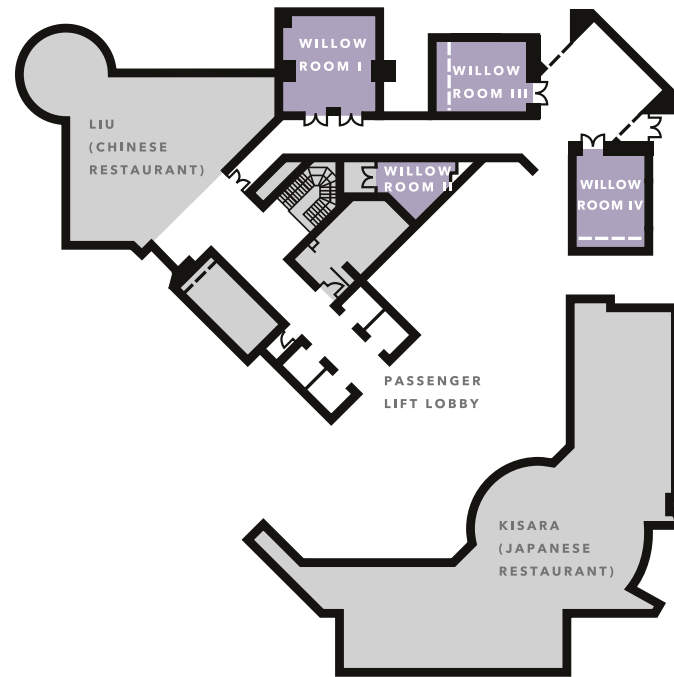
MEETING ROOMS

The hotel also offers three smaller function rooms for a more intimate gathering or engagement. Conrad Bangkok's professional staff are on-hand to assist with intuitive service as required and whenever needed.

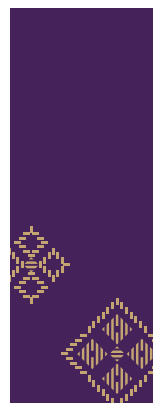
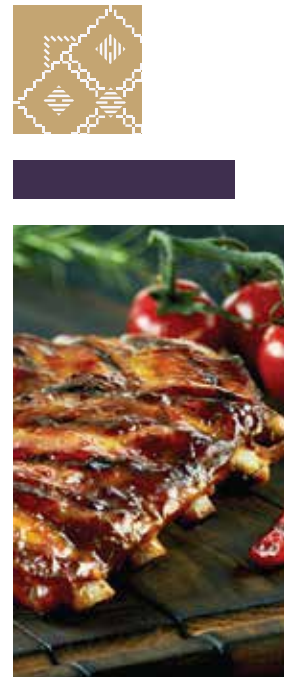


WILLOW ROOMS

Combining modern design features with the latest WiFi and A/V technology, this quiet room is the perfect setting for business meetings with up to ten guests. And because it is adjacent to Liu Chinese restaurant, the Willow Room is also ideal for private dining with family and friends.



Not to scale



RECREATION FACILITY

Stay active with a choice of fitness activities at the Conrad Bangkok. The rooftop jogging track and outdoor pool provide the perfect opportunity to release the day's stress and unwind in a serene and comfortable environment.

